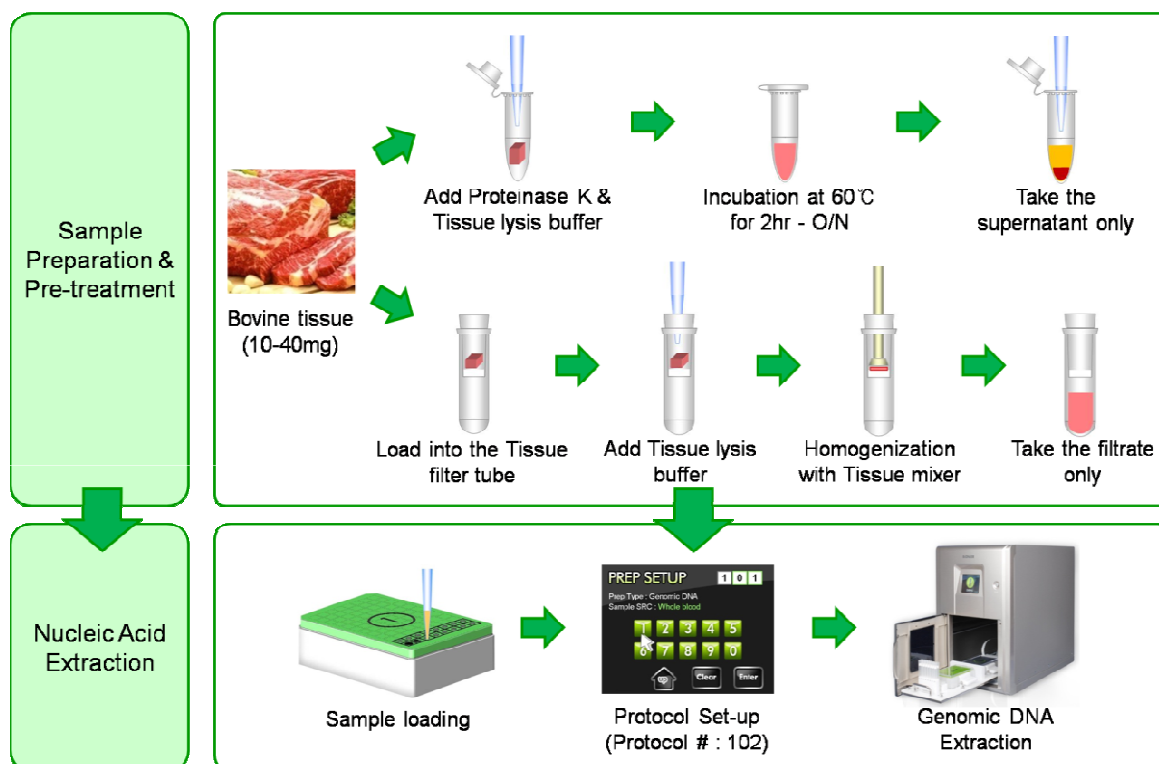


1. Materials

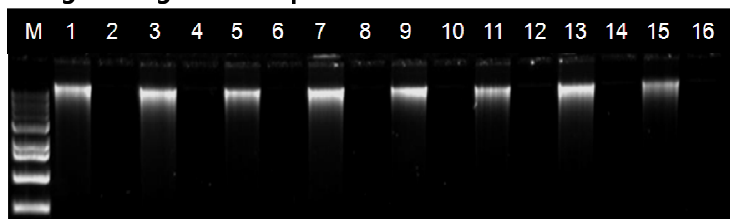
Kit	ExiPrep™ Beef Genomic DNA Kit
Instrument type	ExiPrep™16 Plus
Sample type	Bovine skeletal muscle
Sample amount	Up to 40mg
Protocol ID number	102
Elution volume	100µℓ

2. Experimental Procedure



3. Experimental Results

- Agarose gel electrophoresis



Agarose gel electrophoresis results of 100ng genomic DNA extracted from animal tissue (bovine skeletal muscle). Lane M : size marker, Lane 1, 3, 5, 7, 9, 11, 13, 15 : Extracted samples from bovine skeletal muscle, Lane 2, 4, 6, 8, 10, 12, 14, 16 : Extracted samples from D.W only
Average yield is up to 10ug and purity(A260/A280) is over 1.8.