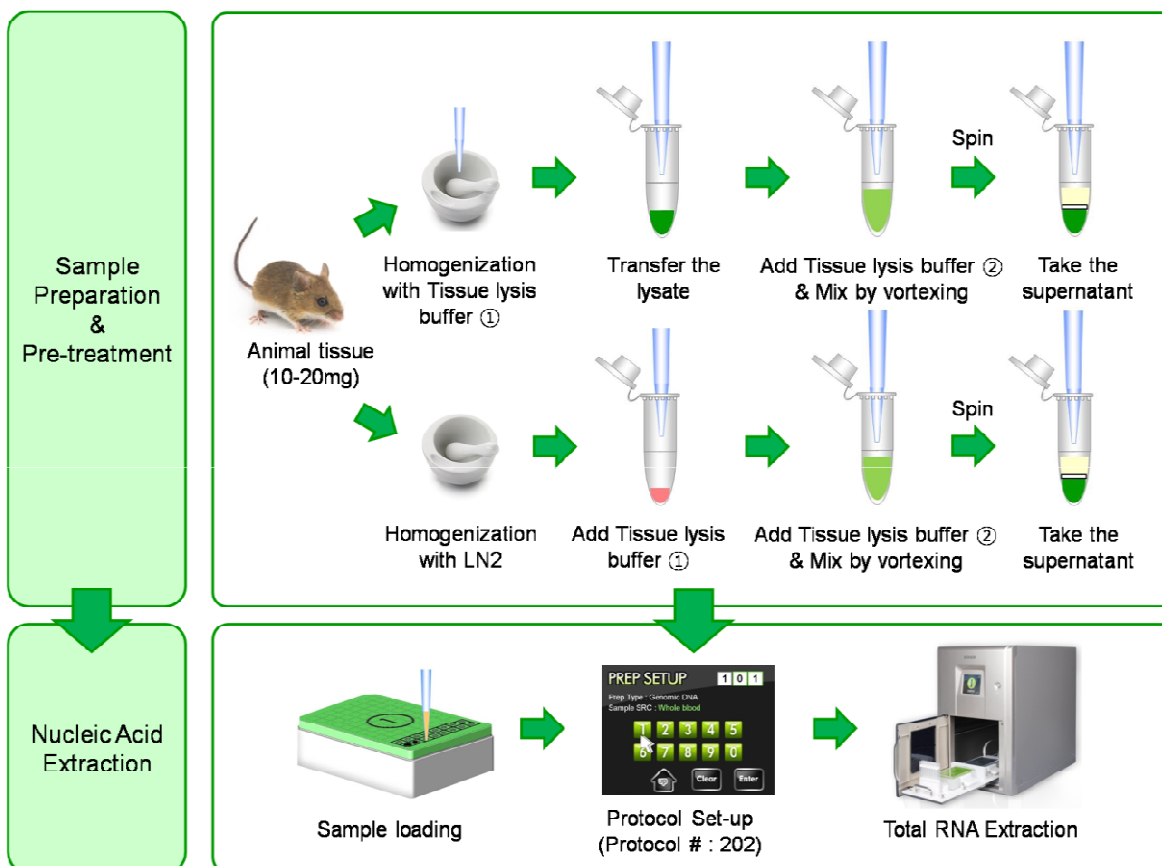


1. Materials

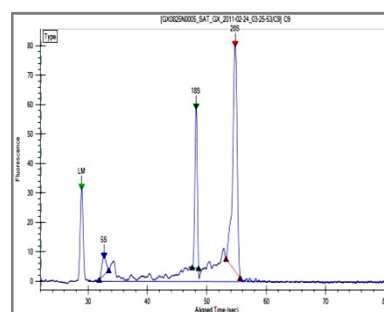
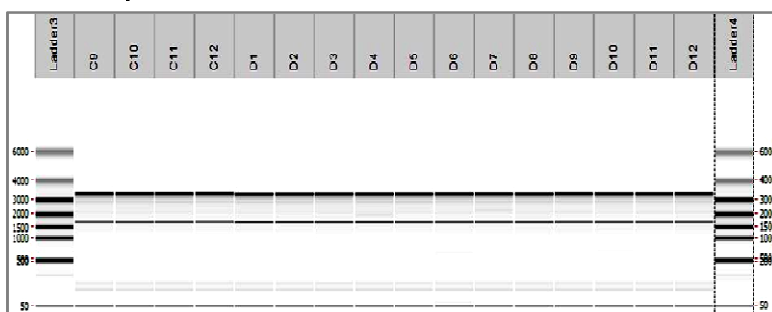
Kit	ExiPrep™ Tissue total RNA Kit
Instrument type	ExiPrep™16 Plus
Sample type	Animal tissue
Sample amount	1 ea
Protocol ID number	202
Elution volume	50 µℓ

2. Experimental Procedure

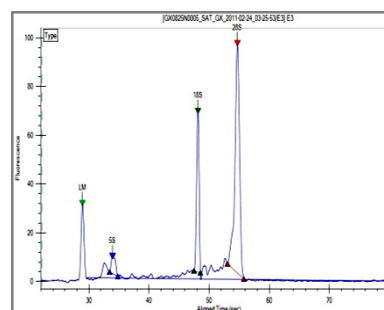


3. Experimental Results

- Electrophoresis result

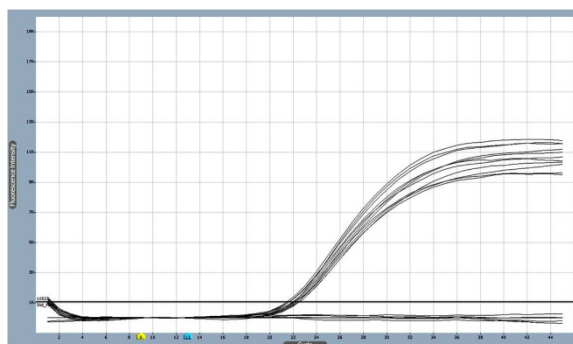


Results of capillary electrophoresis of total RNA extracted from tissue sample (rat liver, 15mg) using LabChip GX (Caliper life science, USA). Average RQS (RNA Quality Score) were at least 9.4. Average yield is up to 25ug and purity (A260/A280) is over 1.9.



Results of capillary electrophoresis of total RNA extracted from tissue sample (rat liver, 15mg) using LabChip GX (Caliper life science, USA). Average RQS (RNA Quality Score) were at least 9.4. Average yield is up to 25ug and purity (A260/A280) is over 1.9.

- Real time PCR result



Real-time RT-PCR results using an *AccuPower® RocketScript™* RT PreMix (K-2101, Bioneer), *AccuPower® Dualstar™* qPCR PreMix (K-6110, Bioneer) and run on *Exicycler™* 96 Real-Time PCR System (A-2060, Bioneer) from total RNA extracted from liver sample (rat, 15mg).