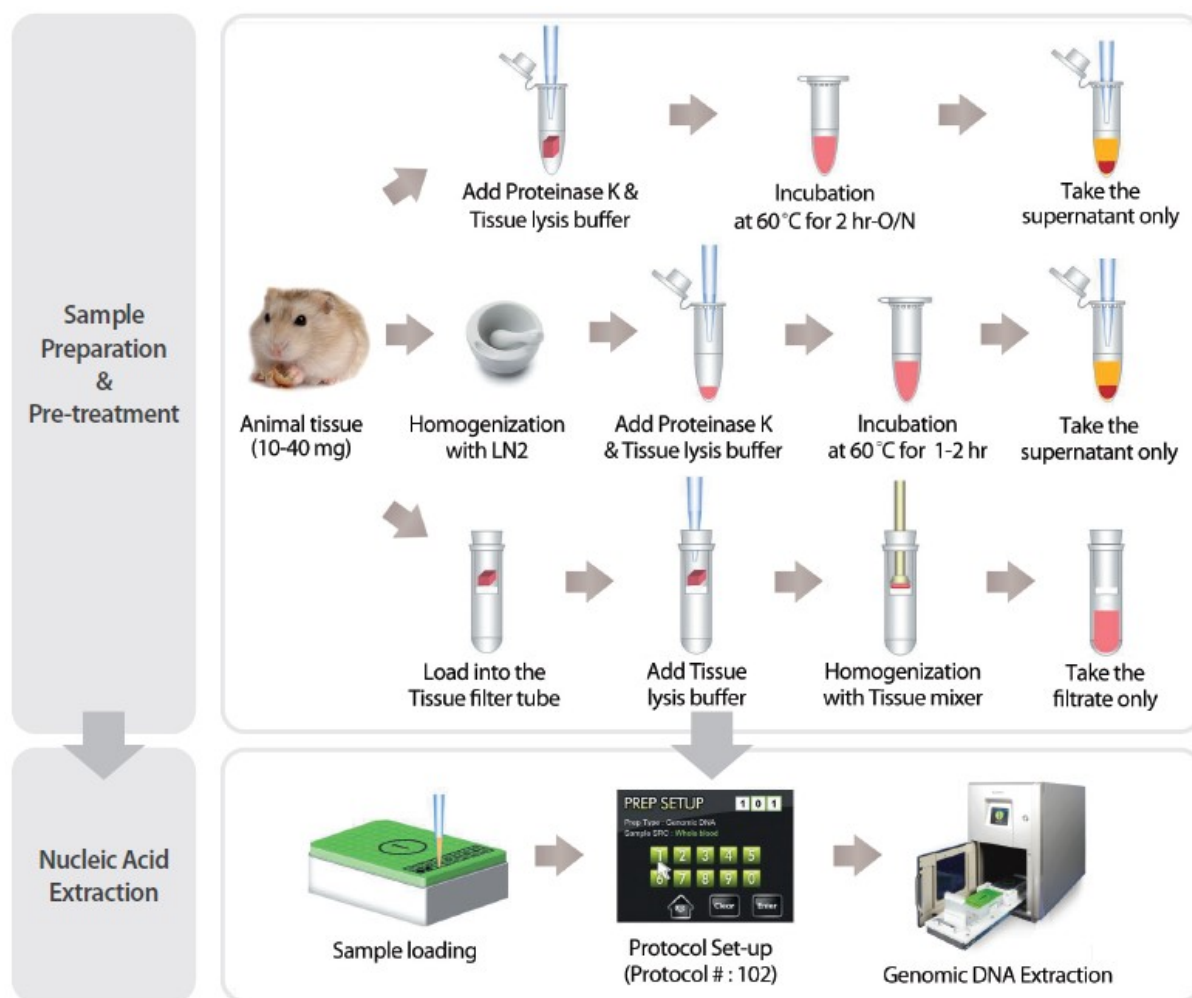


1. Materials

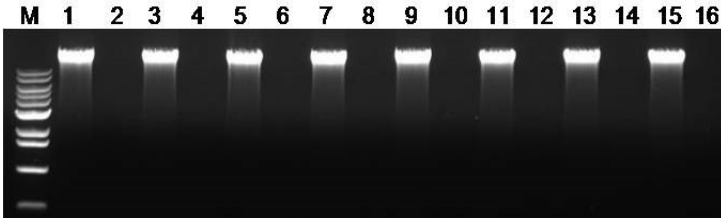
Kit	ExiPrep™ Tissue Genomic DNA Kit
Instrument type	ExiPrep™ 16 Plus
Sample type	Animal tissue (mouse)
Sample amount	25mg
Protocol ID number	102
Elution volume	50µℓ

2. Experimental Procedure

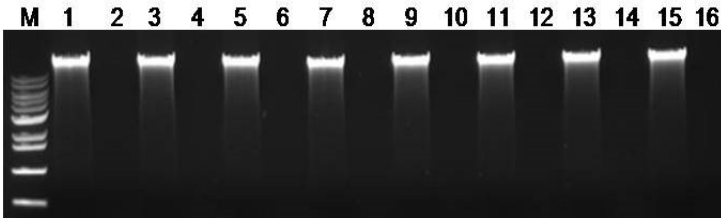


3. Experimental Results

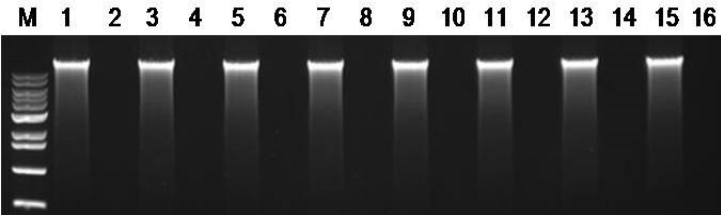
- Agarose gel electrophoresis



Agarose gel electrophoresis results of 100ng genomic DNA extracted from 25mg of brain (mouse) samples. Lane M : size marker, Lane 1, 3, 5, 7, 9, 11, 13, 15 : Extracted samples from brain sample, Lane 2, 4, 6, 8, 10, 12, 14, 16 : Extracted samples from D.W only. Average yield is up to 8-10ug and purity(A260/A280) is over 1.8.



Agarose gel electrophoresis results of 100ng genomic DNA extracted from 25mg of lung (mouse) samples. Lane M : size marker, Lane 1, 3, 5, 7, 9, 11, 13, 15 : Extracted samples from lung sample, Lane 2, 4, 6, 8, 10, 12, 14, 16 : Extracted samples from D.W only. Average yield is up to 20ug and purity(A260/A280) is over 1.8.



Agarose gel electrophoresis results of 100ng genomic DNA extracted from 0.5cm of tail-tip (mouse) samples. Lane M : size marker, Lane 1, 3, 5, 7, 9, 11, 13, 15 : Extracted samples from tail-tip sample, Lane 2, 4, 6, 8, 10, 12, 14, 16 : Extracted samples from D.W only. Average yield is up to 10ug and purity(A260/A280) is over 1.8.