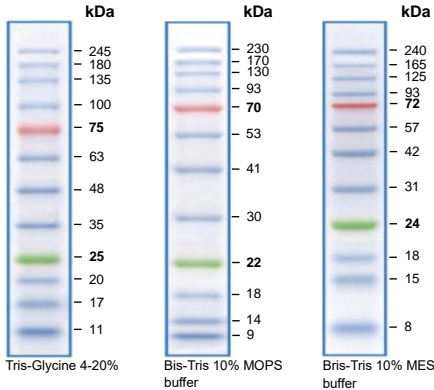


[Cat. No.] **D-2030**

Size Description



Recommended Loading Volume	5 µl/lane [Minigel; 10x8 (cm ²), 0.75 or 1.0 mm thick]
Number of Bands	12
Typical Loading Number of Lanes	100
Volume	500 µl
Ready-to-use	Yes

* **Note:** For research use only. Not for use in diagnostic or therapeutic procedures.

Storage Buffer

AccuLadder™ 3-color Prestained Protein Size Marker (Broad) is supplied in 20 mM Trisphosphate (pH 7.5 at 25°C), 2% SDS, 0.2 mM DTT, 3.6 M Urea, and 15% (v/v) Glycerol.

Storage

Store AccuLadder™ 3-color Prestained Protein Size Marker (Broad) at -20°C.

Precautions

- Do not boil before loading.
- Repeated freezing and thawing should be avoided.

[Cat. No. D-2030]

AccuLadder™ 3-color Prestained Protein Size Marker (Broad)

Introduction

AccuLadder™ 3-color Prestained Protein Size Marker (Broad) consists of 12 kinds of proteins in the range of 11-245 kDa, which is ready-to-use. Proteins are covalently coupled with a blue chromophore except for two reference bands (one green and one red band at 25 kDa and 75 kDa respectively) when separated on SDS-PAGE in Tris-glycine-SDS running buffer. The Marker is designed for monitoring protein migration during SDS-PAGE, verification of Western transfer efficiency on membranes (PVDF, nylon, or nitrocellulose) and sizing of proteins.

Features & Benefits

- Accurate molecular weight determination: Because coupling of chromophores to the proteins in pre-stained markers affects their apparent molecular weights in SDS-PAGE relative to unstained proteins, unstained protein markers should be used for accuracy > 95%.
- Ready-to-use format: The marker is supplied in a loading buffer for direct loading, and heat incubation is not required.
- Easy to identify: The marker contains the 25 and 75 kDa reference bands coupled with a green and a red dye.

Specifications

	D-2030
Range	11-245 kDa
Concentration	0.1-0.4 mg/ml

Online Resources



Korean



English

Visit our **product page** for additional information and protocols.

Ordering Information

Description	Cat. No.
AccuLadder™ 3-color Prestained Protein Size Marker (Broad)	D-2030

Notice

BIONEER corporation reserves the right to make corrections, modifications, improvements, and other changes to its products, services, specifications, or product descriptions at any time without notice.

Explanation of Symbols

Batch Code	Catalog Number	Caution	Consult Instructions For Use
Contains Sufficient for <math><n></math> tests	Research Use Only	Temperature Limitation	Use-by Date